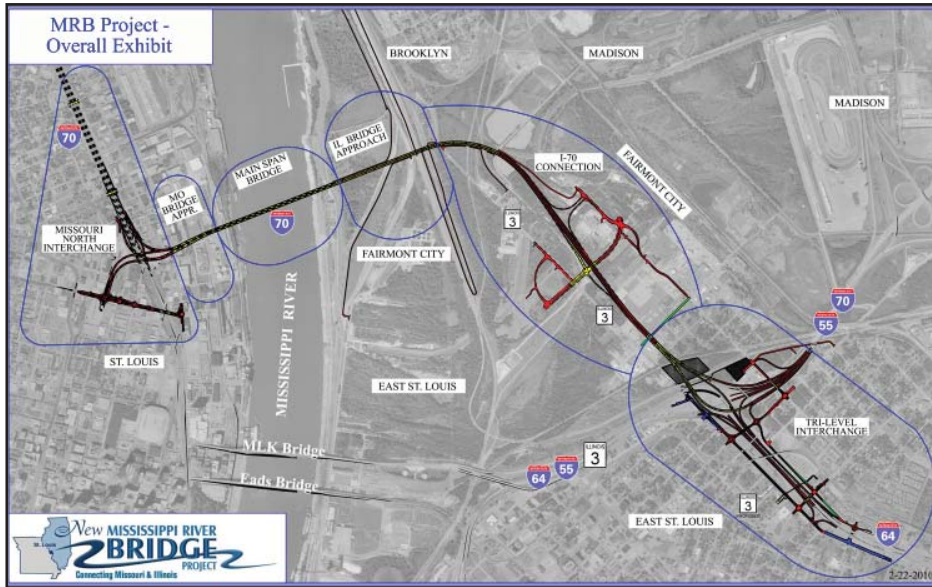


Project Map



Special Thanks

- Federal Highway Administration
- City of St. Louis
- Madison County Transit
- City of East St. Louis
- Army Corps of Engineers
- U.S. Coast Guard
- Illinois State Police
- Missouri State Police
- St. Louis Police Department

Sponsored by:
Missouri Department of Transportation
1590 Woodlake Drive
Chesterfield, MO 63017

Sponsored by:
Illinois Department of Transportation
1102 Eastport Plaza Drive
Collinsville, Illinois 62234-6198

Groundbreaking Ceremony
Monday, April 19, 2010
10:30 a.m.



Mississippi River Bridge Main Span

The Missouri and Illinois Departments of Transportation, along with the main span contractor team, Massman Construction/Traylor Brothers/Alberici is pleased to announce the start of work on the main span for the new Mississippi River Bridge project. The cable stayed bridge will relocate Interstate 70 from the Poplar Street Bridge to the new bridge. Currently, the project is expected to be open to traffic in 2014.

Project Facts

- The 1,500 foot main span will be the third longest cable stayed bridge in the United States.
- The main span will cost \$229.5 million.
- At 400 feet, the towers for the main span are two-thirds the height of the St. Louis Arch.
- Missouri and Illinois governors signed the bi-state agreement for the new Mississippi River Bridge project in February 2008. Two years later, we are breaking ground for the main span of the project.
- The cable stayed portion of the bridge will require 8 million tons of reinforcing steel - equivalent to the weight of 363 school buses.
- The main span requires 14.8 million pounds of girders - equivalent to the weight of 925 elephants.
- This project will construct a four-lane bridge - two lanes in each direction.
- This project will accommodate building a companion bridge to provide an additional four lanes. The companion bridge will be constructed in the future if traffic levels dictate and funding becomes available.

Program of Events

Welcome

Ed Hassinger, *MoDOT St. Louis District Engineer*
Mary Lamie, *IDOT Regional Engineer*

Remarks By Officials

Pete Rahn, *Director, Missouri Department of Transportation*
Gary Hannig, *Secretary, Illinois Department of Transportation*
Governor Pat Quinn, *Illinois*
Governor Jay Nixon, *Missouri*
U.S. Senator Christopher “Kit” Bond, *Missouri*
U.S. Representative Jerry Costello, *Illinois*
Ray LaHood, *U.S. Secretary of Transportation*
U.S. Senator Richard Durbin, *Illinois*
U.S. Representative John Shimkus, *Illinois*
U.S. Representative William “Lacy” Clay, *Missouri*
U.S. Representative Russ Carnahan, *Missouri*
Mark Kern, *St. Clair County Board Chairman*
Mayor Francis Slay, *St Louis*

Presentation by MoDOT and IDOT
Secretary Hannig and Director Rahn will make a presentation to
Secretary LaHood, Senator Bond and Congressman Costello

Groundbreaking for the
New Mississippi River Bridge